

## **Compatibility of the eMigrate website with latest version of the browsers**

It is being reported by many users that eMigrate website is not supported by the latest versions of various browsers. With regard to this, users are advised to follow the steps given below to access the eMigrate website.

### **1. How to access eMigrate website on various browsers –**

eMigrate website is working fine on following browser versions -

- (i) Google Chrome version 96.0 and below
- (ii) Mozilla Firefox version 48.0
- (iii) Internet Explorer version 11

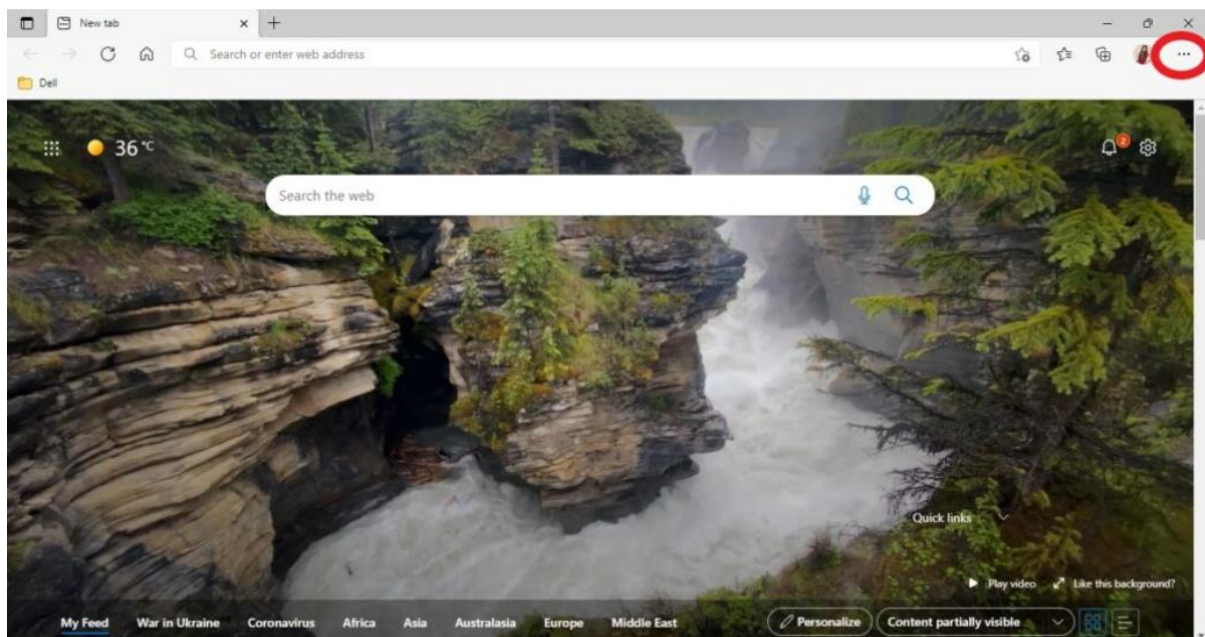
**Note** - Auto update and its service needs to be turned off after downgrading or reinstalling the browser.

### **2. How to access eMigrate System in Microsoft Edge**

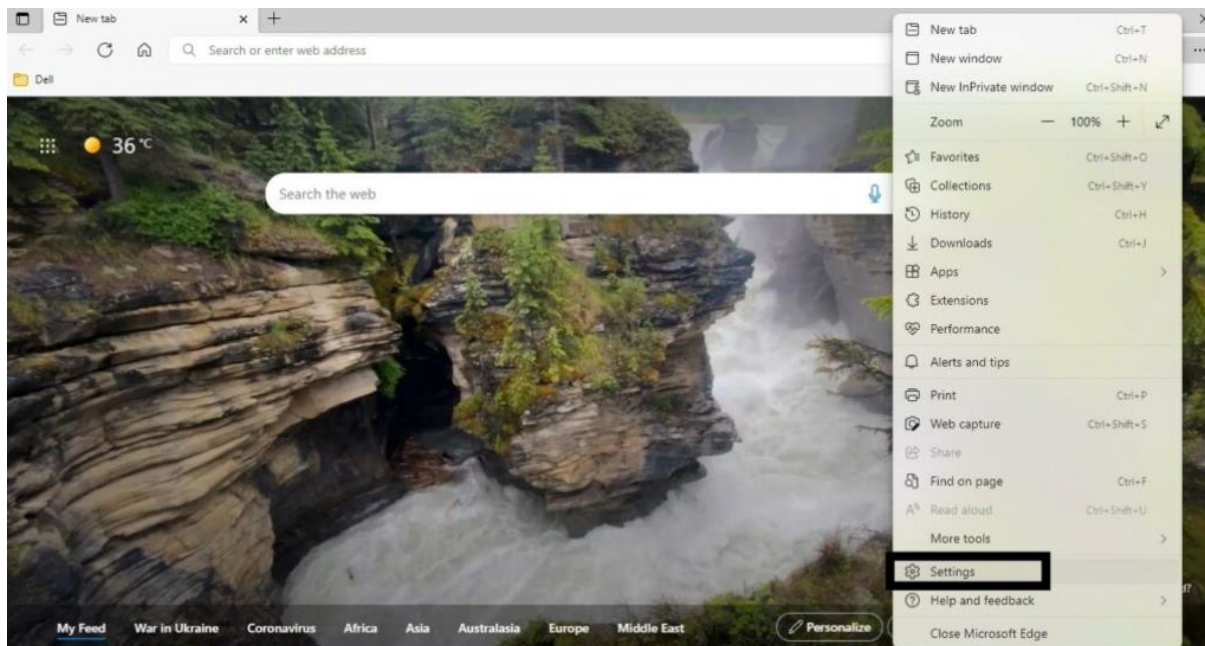
#### **Method 1-**

**Step1:** Open Microsoft Edge browser on your PC.

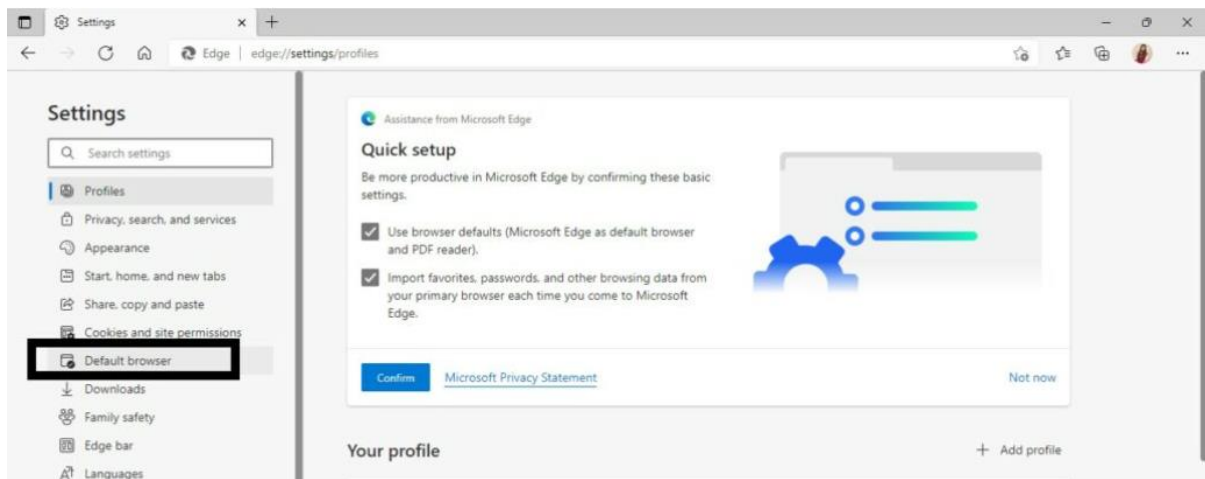
**Step2:** Click on the Kebab menu at the top right corner of the browser window.



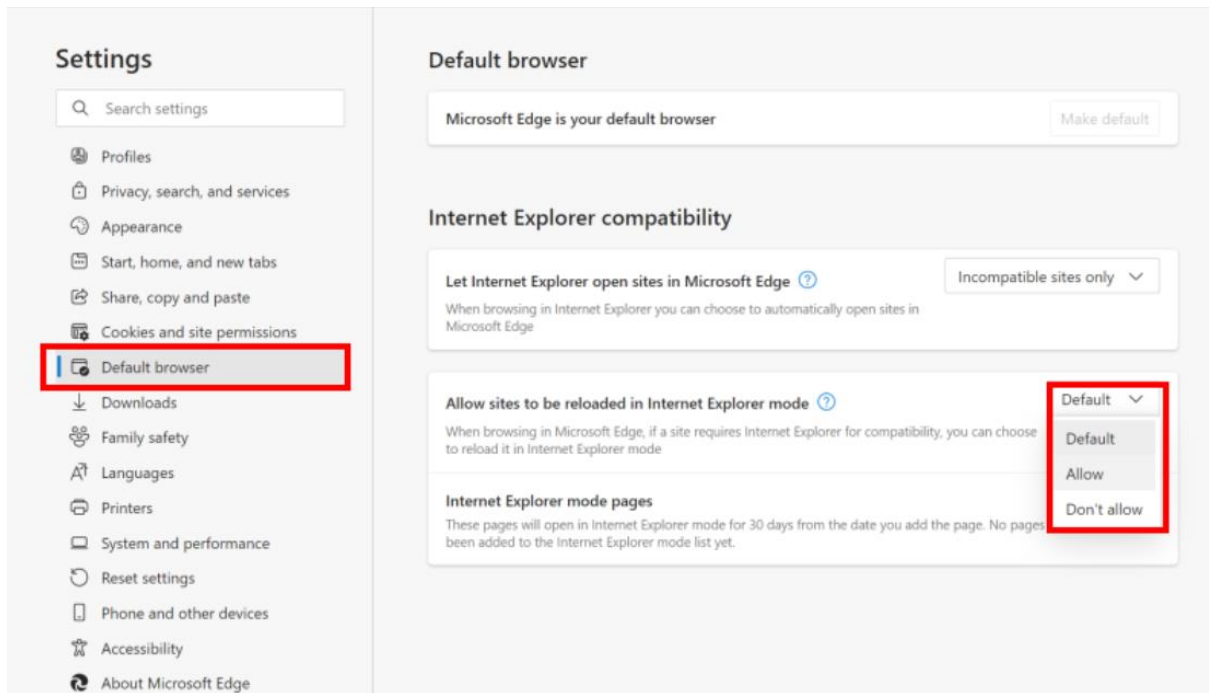
### Step3: Select Setting



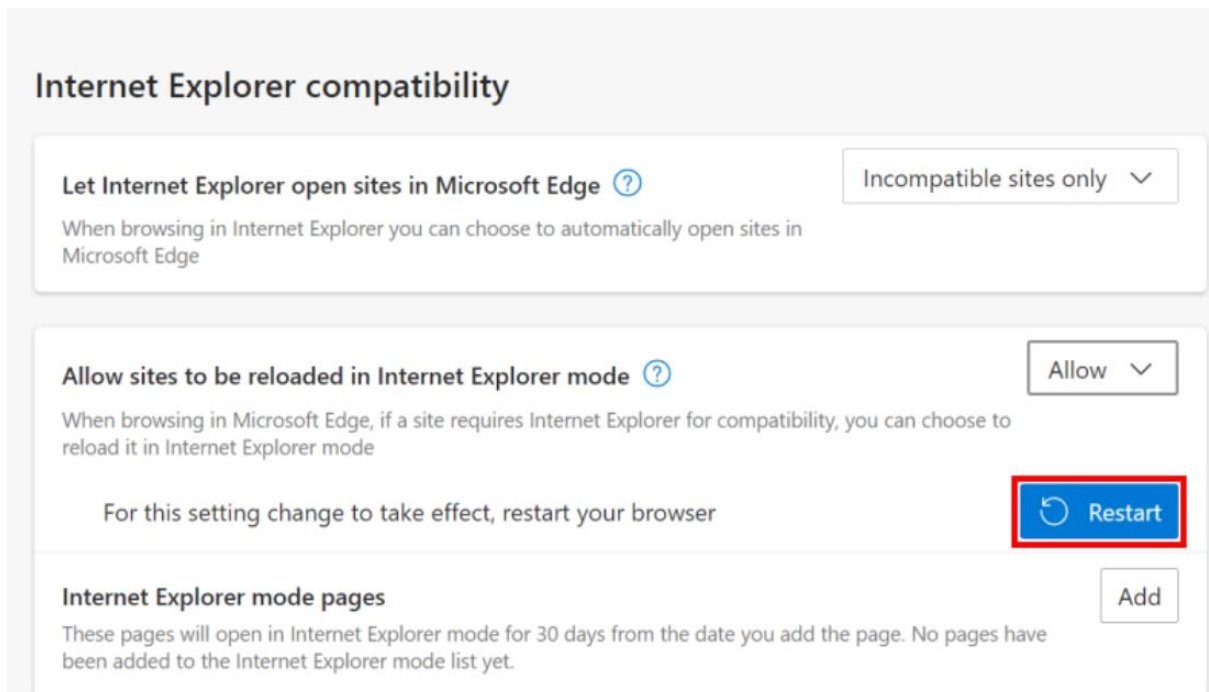
**Step-4:** On the left side of the screen, you will see the settings sidebar. Locate the **Default browser** and select the option.



**Step-5:** Select **Allow** from the drop-down menu next to **Allow sites to be reloaded in Internet Explorer mode**.

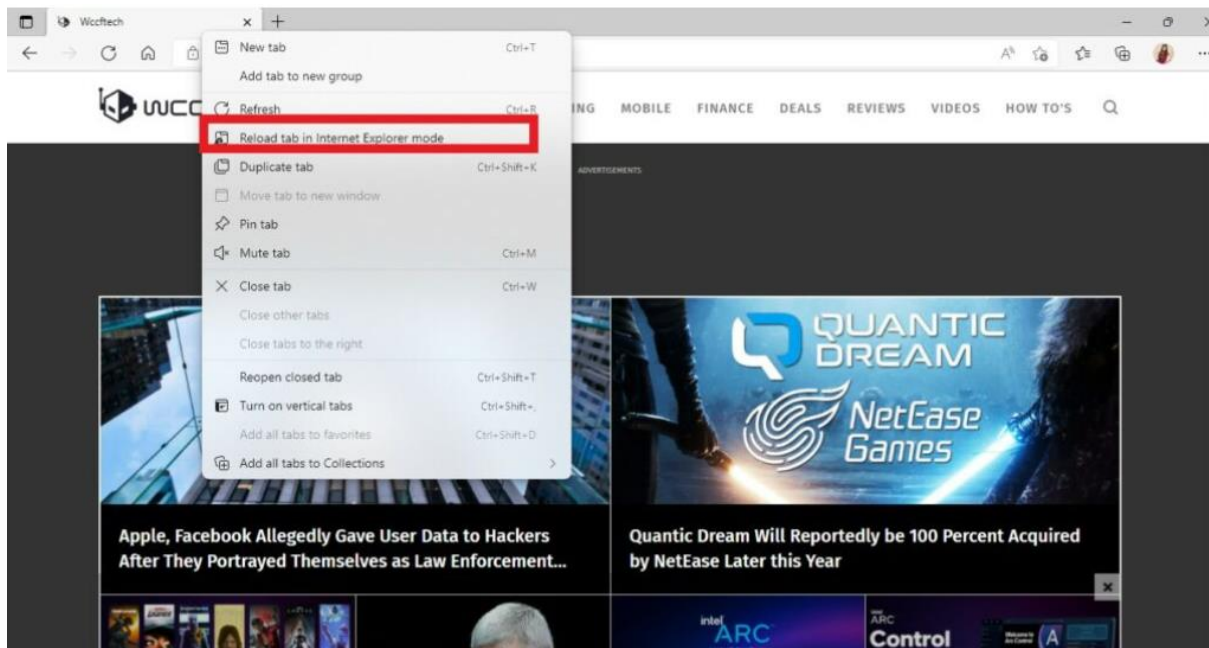


**Step-6:** Select **Restart**.

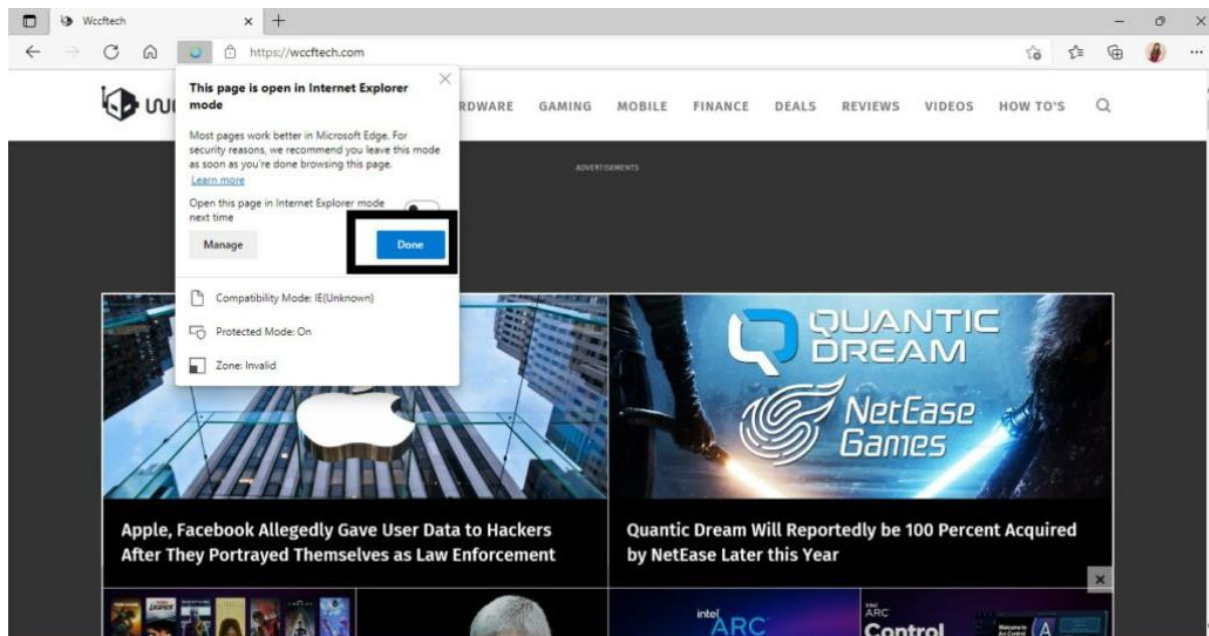


**Step-7:** After the browser opens again, type the site you wish to visit.

**Step-8:** Right-click the tab and select **Reload tab in Internet Explorer mode**.

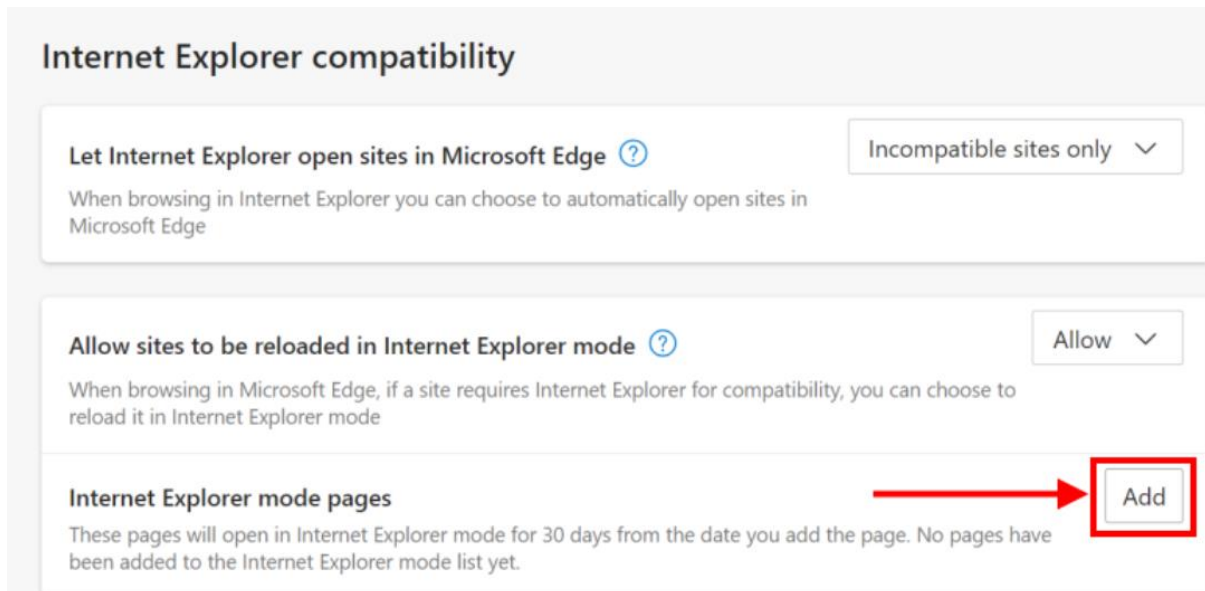


**Step-9:** You will see another window. Select **Done**.



## **Method 2 : Switch to Internet Explorer mode automatically**

You can also add websites or web pages to Internet Explorer mode so that they load in it automatically. They will only do so for the next 30 days. Click the **Options button** then **Settings** then **Default Browser**. Click the **Add** button next to **Internet Explorer mode pages**.



Enter the web address of the website, <https://www.emigrate.gov.in> and Click **Add** and the site will be added to the Page list.

